

Probe type



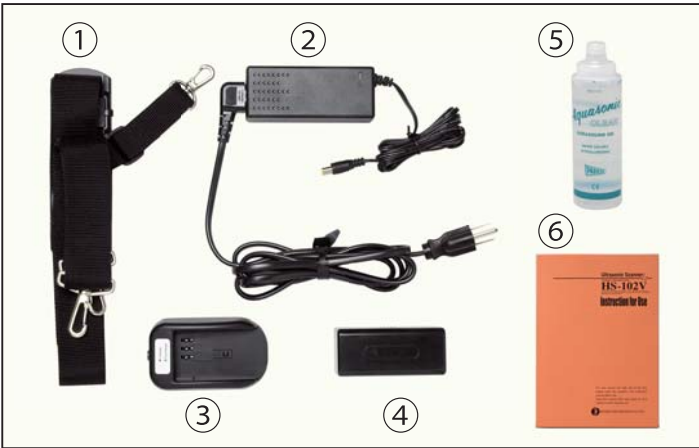
Specified probe is hardwired to unit (no probe connector)

SPECIFICATIONS

Scanning Method	Convex · Linear electronic scan
Display Mode	B-mode (single)
Monitor	5.7inch QVGA LCD
Range	Range select: 6 -24cm (2cm step)
Focusing Method	Digital beam forming
Image Adjustment	Auto gain control Gain control: 16 steps STC control: 8 steps
Image Store	Flash memory (60 Images)
Image Functions	Date & Time Probe type Range (Gain Value)
Measurement function	Distance (mm)
Interface	USB port × 1
Dimensions (WxDxH)	Approx. 184 × 62 × 270 (mm)
Weight	Approx. 2.0 kg (including the probe and battery)
Power Source	Battery Approx. 2 hours continuous operation Battery charger : Input Voltage: 100V-240V AC 50/60Hz
Probes	HCS-136C : 3.5MHz 60R Convex probe HCS-152 : 5.0MHz 20R Microconvex probe HLV-155 : 5.0MHz 50mm Rectal probe
Standard components	HS-102V with Probe Shoulder belt, AC adapter, Power supply cord Charger base, Battery × 2, Gel, Manual
Option	Protection cover, Carrying case

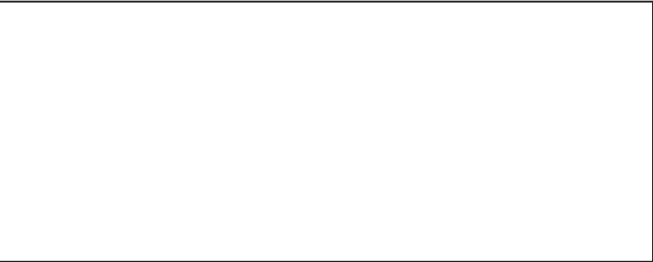
*The specifications and appearance are subject to change without notice for improvement.
*Made in Japan

ACCESSORIES



① Shoulder belt ② AC Adapter & Power supply cord
③ Charger base ④ Battery × 2 ⑤ Gel ⑥ Manual

OPTION



2017/11/01

HONDA ELECTRONICS CO.,LTD.

DIAGNOSTIC SCANNER
Convex / Linear Ultrasonic System

HS-102V

Our unique technology is the product of our originality and continual pursuance of achieving high quality. It is also our purpose to contribute in ways that will enhance society.

5.7inch



LCD Brightness
1000 cd/m²



Medical Division
20 Oyamazuka, Oiwa-cho, Toyohashi
Aichi Prefecture, 441-3193 Japan
TEL: +81-532-41-2514 FAX: +81-532-41-4441
<https://www.honda-el.co.jp>

Registered company for
ISO 9001/ ISO 13485/ ISO 14001

For the small, large and mixed animal practice
Advanced technology and excellent image
Quality embodied in stylish unit



MADE IN JAPAN



A Special Compact Unit In Its Own Right

Advanced technology and excellent image embodied in a compact unit

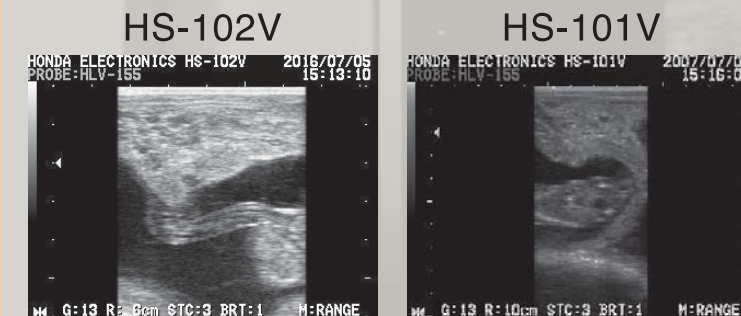
1 Portability

Portability with shoulder belt allows total freedom of movement.
Compact design and easy operation.



2 High Luminance LCD

1000 cd/m² LCD provides easy viewing.



3 Easy Operation

Thanks to simple button design, operation is easy.
Auto gain function eliminates tedious work adjusting image.
Symmetric button design allows left or right handed operation.

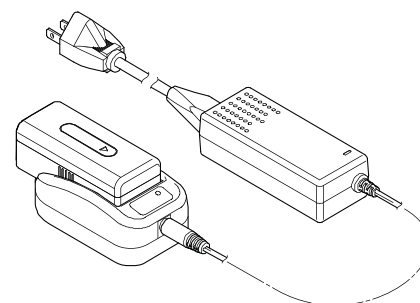


4 Battery

Approx. 2 hours battery operation allows continuous scanning anywhere, anytime.



For charging of battery, an external charger is included.
It is available as standard for AC100V-240V along with power supply cord.



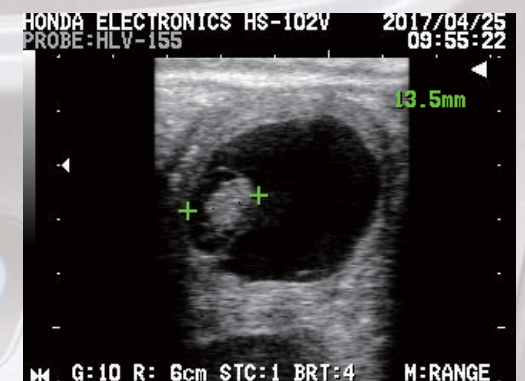
5 Image Storage

60 still images can be stored, and memory function allows review of the stored pregnancy images.
USB port is standard.



6 Measurement

Measurement function can help calibration of the size of fetuses.



Sow Pregnancy



Cattle Pregnancy



Ultrasonic Scanner

Convex • Linear Ultrasonic System

The HS-102V

Features:

1. Portability
2. High luminance LCD
3. Easy Operation
4. Battery
5. Image Storage
6. Coil Cord

